

GIRINZU
urban villages for future generations

Lilo 4-5

House with 225 m² to 245 m² living space including 4 to 5 bedrooms, 3 bathrooms, 1 separate kitchen with laundry and storage, 2 terraces and a large private garden.

Contact us to adjust the plan at your convenience !



Contact us
+250 789 862 888

starting from
\$ 145 000

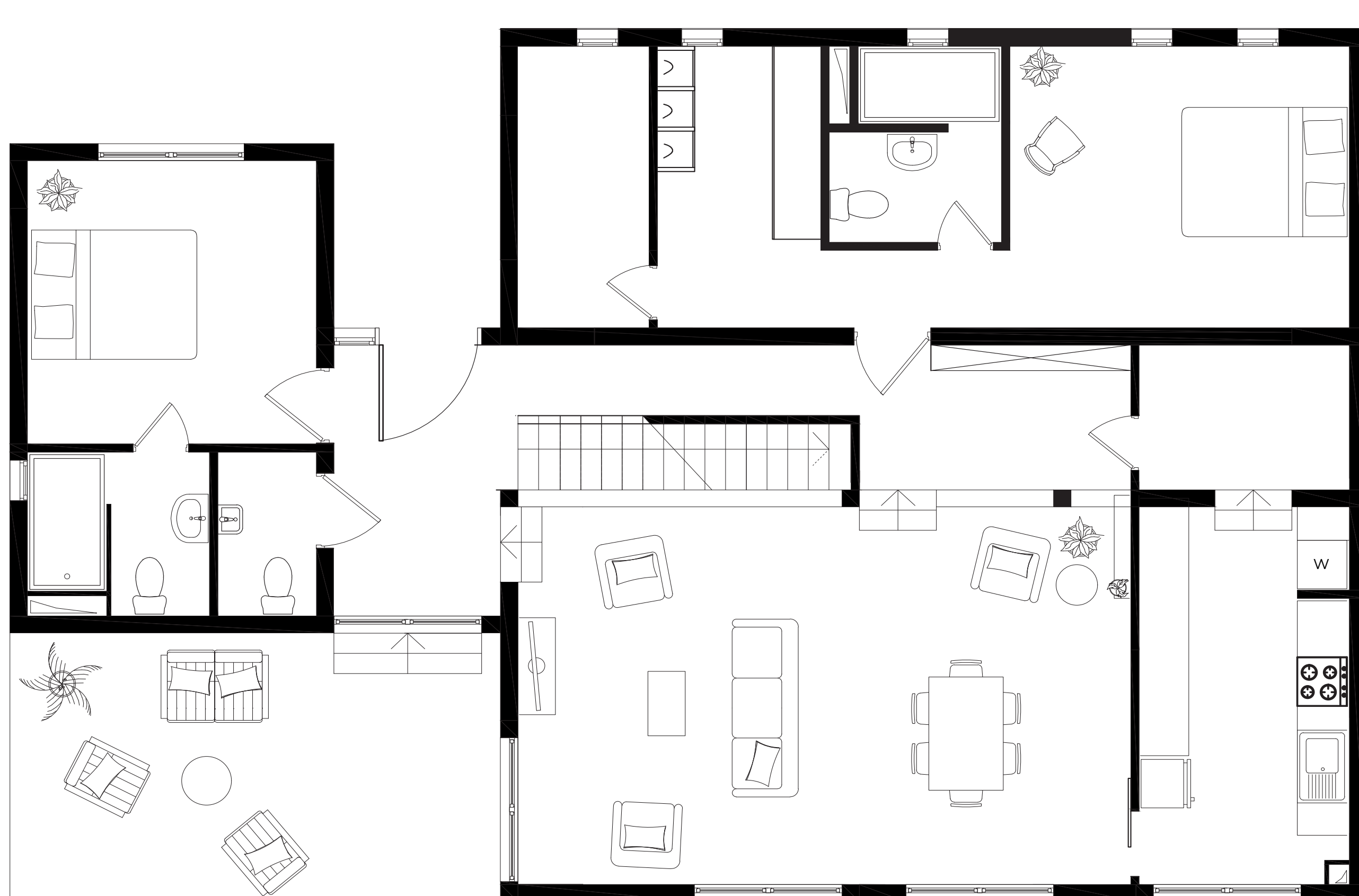
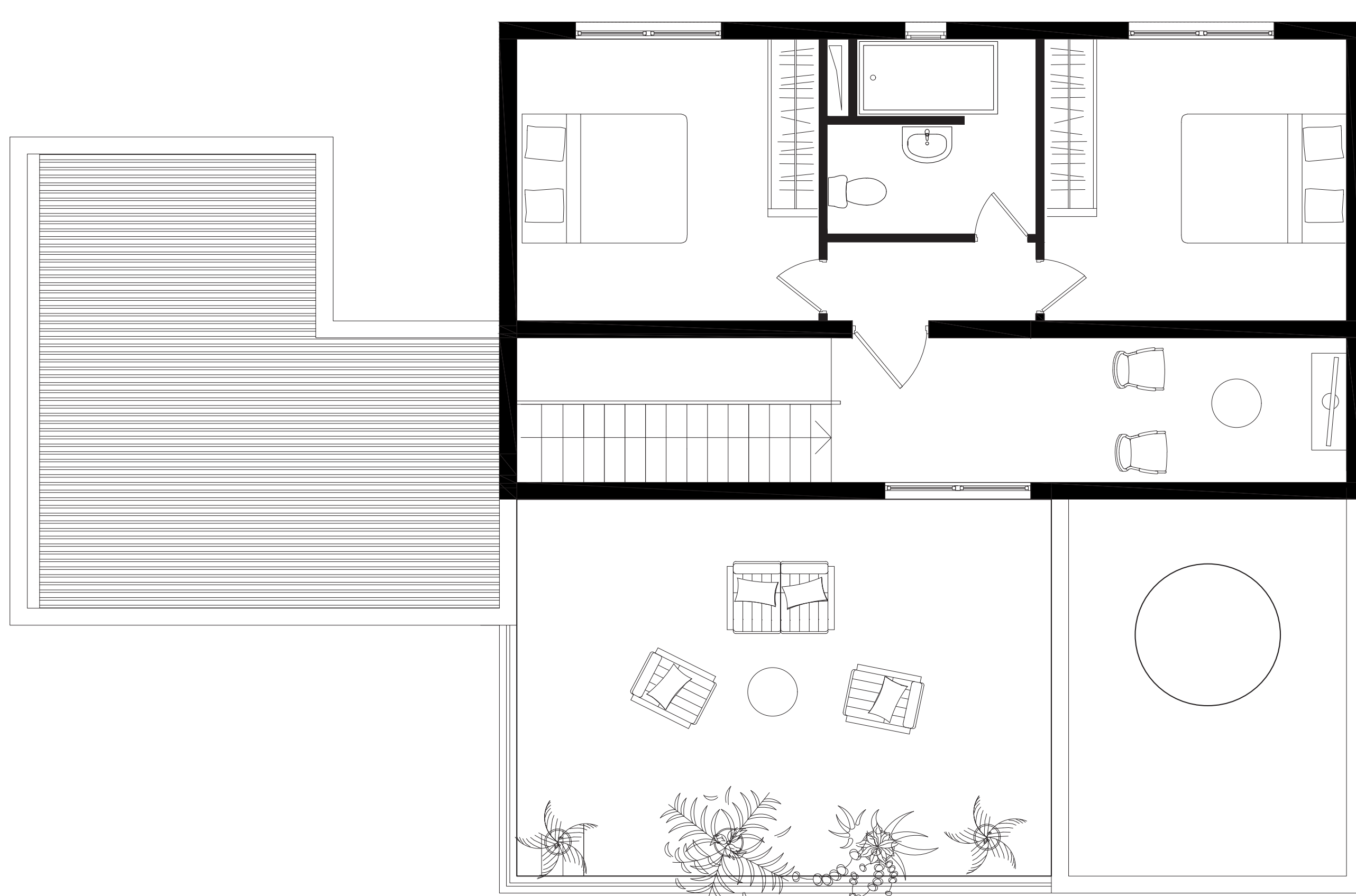
DESCRIPTION

FIRST FLOOR

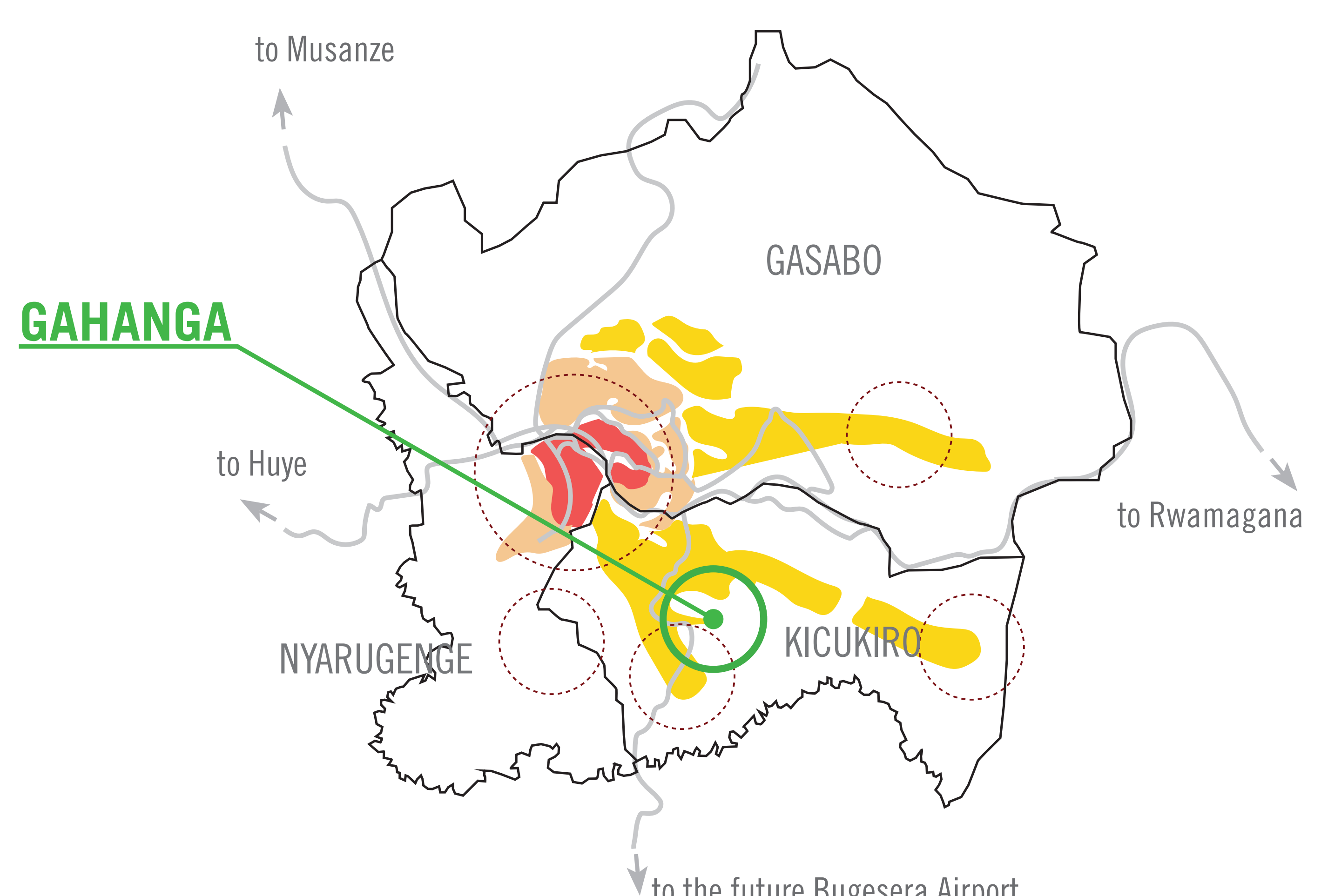
- 1 Bedrooms : 12,5 m² x 2
- Bathroom : 5,4 m²
- Children space: 6,4 m²
- Panoramic terrace : 30,2 m²
- Technical terrace : 15,7 m²

GROUND FLOOR

- 2 Living and dining spaces : 34,6 m²
- Kitchen: 11,8 m²
- Total master suite : 29,2 m²
- Bedroom : 14,3m², Bathroom: 5 m²,Dressing : 6,9 m²
- Bedroom: 12,m² (+1 bedroom in option)
- Bathroom + WC : 4,1 m² & 2,7 m²
- Stock : 4,5 m²



+250 789 862 888
sales@girinzu.com
X4R7+F7 Kigali
Visits by appointments



GIRINZU.COM   