



GIRINZU

urban villages for future generations

Lilo 4-5

House with 164 m² to 192 m² living space including 4 to 5 bedrooms, 3 bathrooms, 1 separate kitchen with laundry, 2 terraces and a large private garden.

Contact us to adjust the plan at your convenience !



Contact us
+250 789 862 888

starting from

\$ 120 000

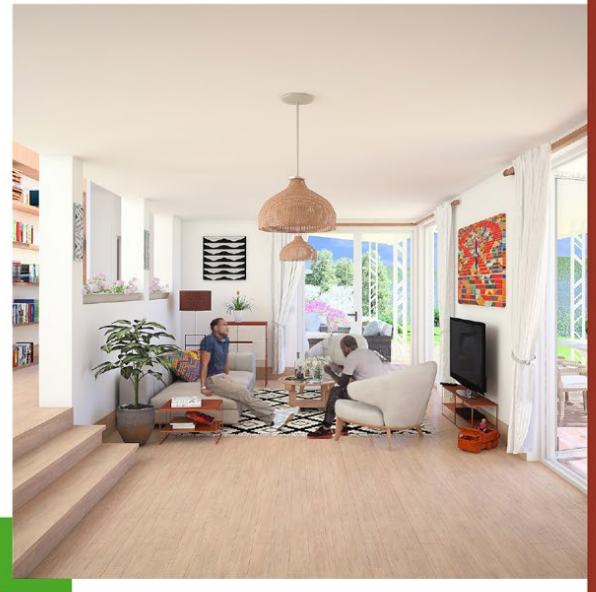
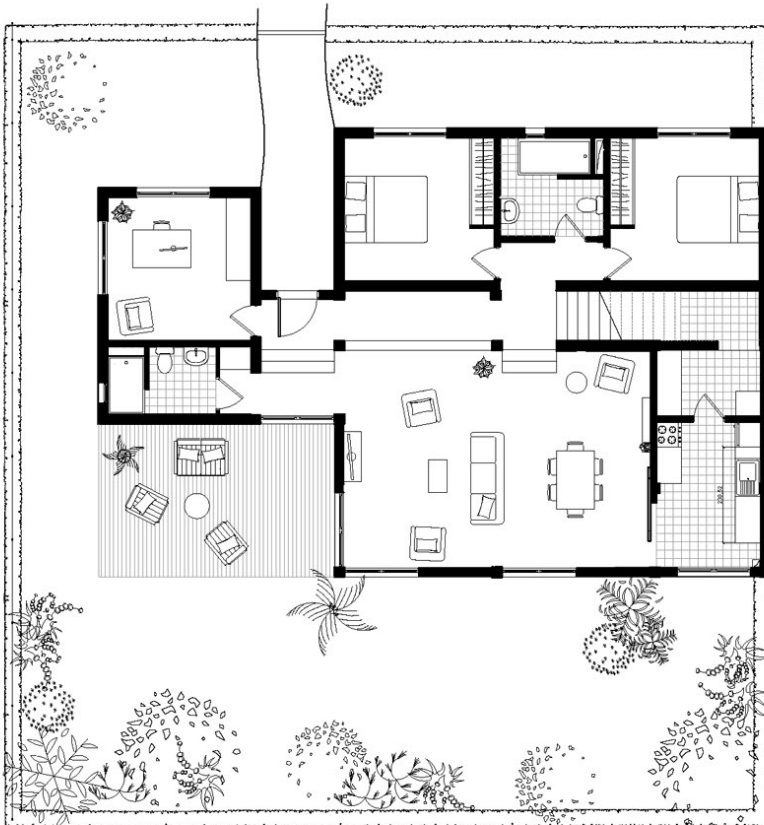
DESCRIPTION

FIRST FLOOR

- 1 Total master suite : 27 m²
 - Bedroom : 13,5 m²
 - Bathroom : 5 m²
 - Dressing room : 4,2 m²
 - Panoramic terrace : 6 m²

GROUND FLOOR

- 2 Living and dining spaces : 34 m²
 - Hall & entrance : 15 m²
 - Kitchen : 9 m²
 - Bedrooms : 12,5 m² x 3 (+1 chambre en option)
 - Bathroom with WC : 5,3 m² & 6 m²



+250 789 862 888
sales@girinzu.com
X4R7+F7 Kigali
Visits by appointments

GIRINZU.COM

